



RS5 - 46 dB

Acoustic Steel Door.



DESCRIPTION

The **RS** range of acoustic doors designed and manufactured by **Acústica Integral** meets all market requirements. These are certified, high-performance, high-quality and robust doors.

ADVANTAGES

A steel acoustic door with high acoustic insulation of **46 dB** and excellent quality/price ratio. Standard models and special manufacturing. A wide range of accessories.

APPLICATIONS

Radio stations, dubbing and recording studios, post production, home cinema, TV sets, rehearsal studios, music schools, music bars, night clubs, pubs, offices, meeting rooms, etc.

SPECIAL ACCESSORIES (upon order)

Glass vision panel, visible key-lock, push-bar, door-closer... etc.

TECHNICAL DATA

Description: 69mm thick steel acoustic door composed by a frame and leaf manufactured with a 1.5mm thick polished metal sheet. Inner filling: soundproofed and absorbing materials. Equipped with double perimetral seals.

Closure: Pressure using inside cam latch.

Surface finish: Synthetic primer (prepared for painting).

Heat transfer coefficient U_a : 1,93 W/m²K.

Acoustic certification: **APPLUS** Nr. 8.323.11060 valid for the door without accessories.

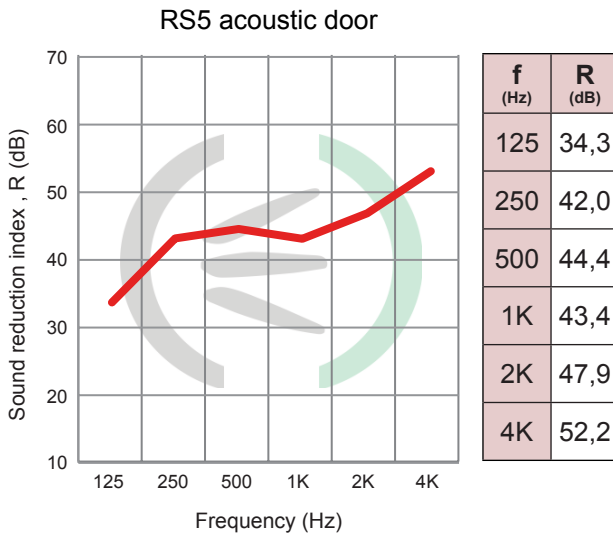


STANDARD DIMENSIONS

Single leaf (W x H in mm.)		
Model	Int. Dim.	Ext. Dim.
RS5/01	800 x 2000	920 x 2120
RS5/02	900 x 2000	1020 x 2120
RS5/03	1000 x 2000	1120 x 2120

Double leaf (W x H in mm)		
Model	Interior Dim.	Exterior dim.
RS5/21	1400 x 2000	1520 x 2120
RS5/22	1600 x 2000	1720 x 2120
RS5/23	1800 x 2000	1920 x 2120
RS5/24	2000 x 2000	2120 x 2120

DETAIL OF THE HANDLE



RS5	
Overall sound reduction index, R_w (C;Ctr):	46 (0;-3) dB
Overall weighted sound reduction index A, R_A :	45,6 dBA

© ACÚSTICA INTEGRAL, S.L. - 2015 - Reserves the right to introduce changes without prior notice.

ASSEMBLY INSTRUCTIONS

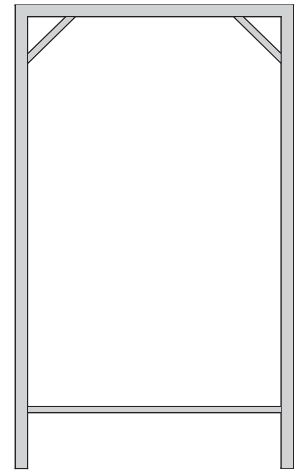
About metallic pre-frame: Firmly fix the metallic pre-frame to the partition wall or the gypsum. Move the acoustic door (frame and leaf), always closed, towards the inside space of the pre-frame and shim the door until it is level. Spot weld for the first time between the door and the pre-frame and check the vertical and horizontal levelling, do not open until definitive welding has been finished. Carry out final welding between the door and the pre-frame, once again check the levelling and open the door to verify that it works correctly. Seal the spans that remain between the pre-frame rim and door with insulating polyurethane foam or acrylic putty if there is just a little space. Keep the door closed as much as possible.

How to use:

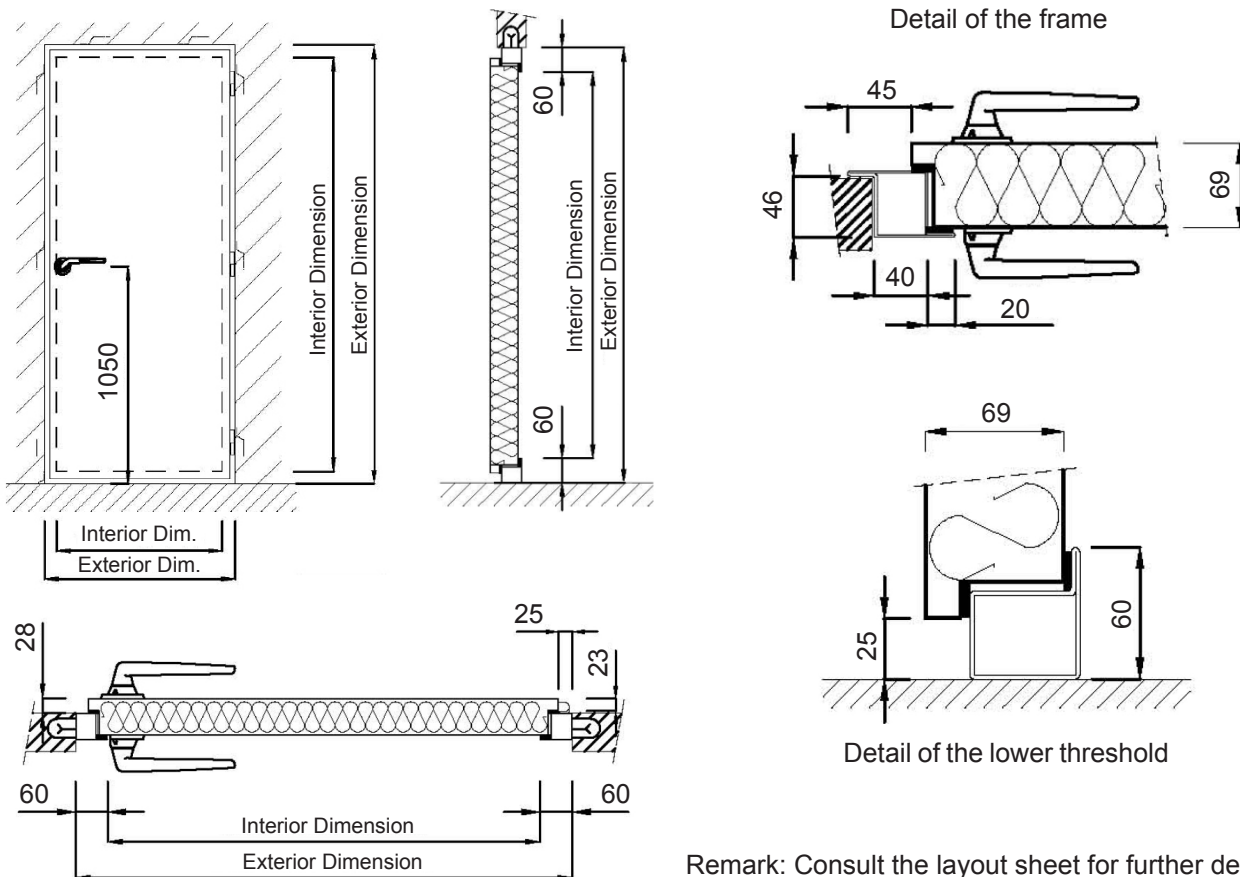
- **Fitted with pressure handle:** To open firmly grip the handle, turn it clockwise and push the leaf; to close it, firmly grip the handle, bring the leaf towards the rim and only then turn the handle anti-clockwise until it is closed.
- **Fitted with latch handle:** To open grip the handle, turn it clockwise and push the leaf; to close it, grip the handle and bring the leaf towards the rim.
- **Fitted with panic bar:** To open, push the bar downwards and push the leaf; to close it, grip the bar or handle and bring it towards the rim.

Use restrictions: Do not hit the door with anything that could deform it. Once the leaf is open don't hang on it. Close the leaf gently without banging.

Preventive maintenance: We recommend an annual service, therefore Acústica Integral offers a contract in which we service: Mobile door elements (Hinges, handles and locks): cleaning, oiling, regulation and checking of good working order of all parts. Draught excluders and intumescent joints: substitution of damaged or badly working parts. Checking for looseness.



DIAGRAMS / PLANS



Remark: Consult the layout sheet for further details.

© ACÚSTICA INTEGRAL, S.L. - 2015 - Reserves the right to introduce changes without prior notice.

